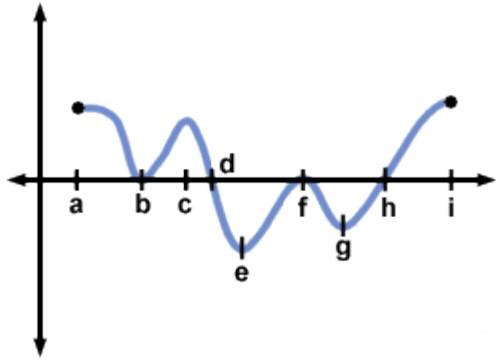


### 11.3 Characteristics of a Function

For each of the following label the characteristics of the function: the intervals where the function is positive and negative, intervals where the function is increasing or decreasing, and if applicable the x and y intercepts.

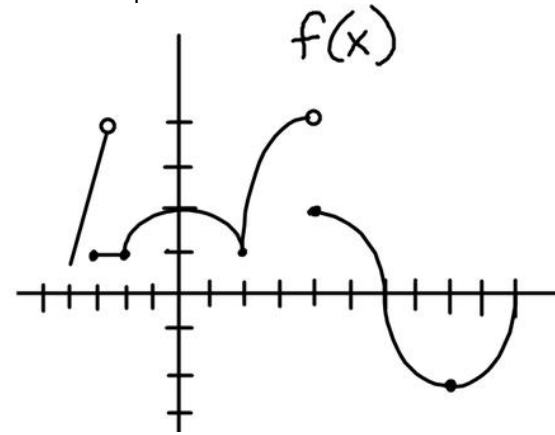
1) Use Inequalities

- Positive:
- Negative:
- Increasing:
- Decreasing:
- x-Intercepts:



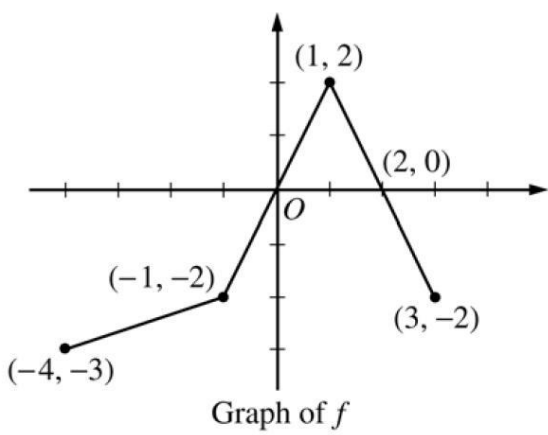
2) Use interval notation

- Positive:
- Negative:
- Increasing:
- Decreasing:
- y-Intercepts:
- x-Intercepts:



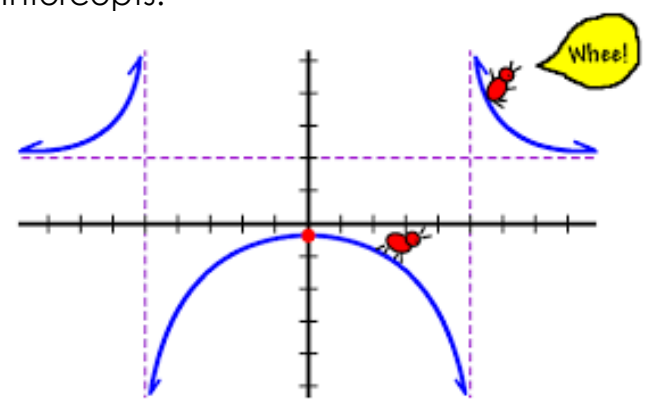
3) Use Inequalities

- Positive:
- Negative:
- Increasing:
- Decreasing:
- x-Intercepts:
- y-intercepts:



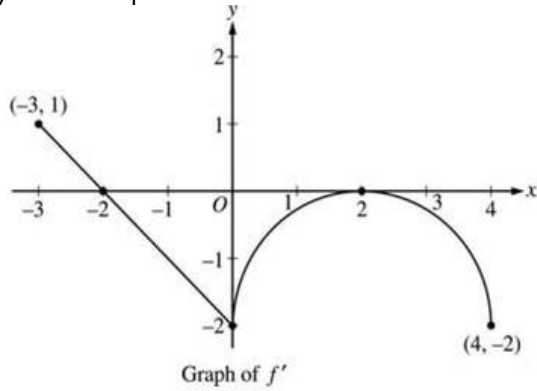
4) Use Inequalities

- Positive:
- Negative:
- Increasing:
- Decreasing:
- y-Intercepts:



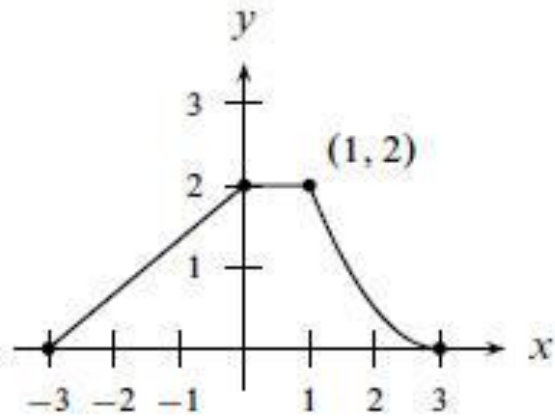
5) Use Interval notation

Positive:  
Negative:  
Increasing:  
Decreasing:  
x-Intercepts:  
y-intercepts:



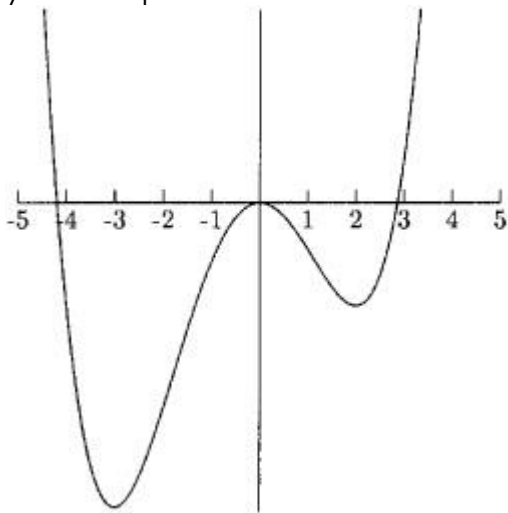
6) Use Inequalities

Positive:  
Increasing:  
Decreasing:  
x-Intercepts:  
y-intercepts:



7) Use interval notation

Positive:  
Negative:  
Increasing:  
Decreasing:  
x-Intercepts:  
y-intercepts:



8) Use interval notation

Positive:  
Negative:  
Increasing:  
Decreasing:  
x-Intercepts:  
y-Intercepts:

