

10.3 Characteristics of a Function

For each of the following label the characteristics of the function: the intervals where the function is positive and negative, intervals where the function is increasing or decreasing, and if applicable the x and y intercepts. Pick 6 of the following to complete.

1) Use Inequalities

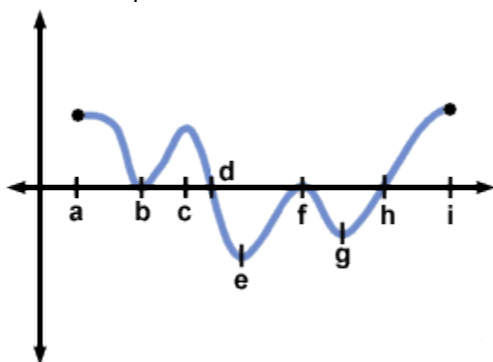
Positive:

Negative:

Increasing:

Decreasing:

x-Intercepts:



2) Use interval notation

Positive:

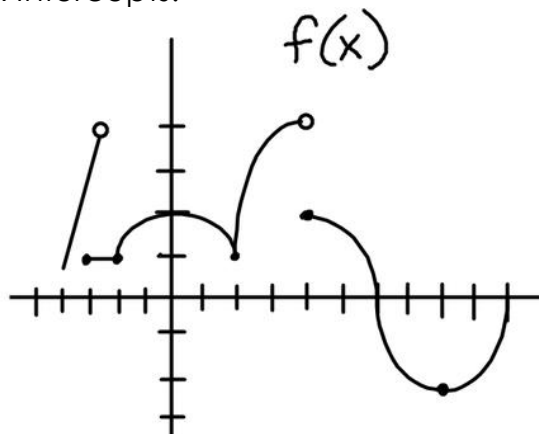
Negative:

Increasing:

Decreasing:

y-Intercepts:

x-Intercepts:



3) Use Inequalities

Positive:

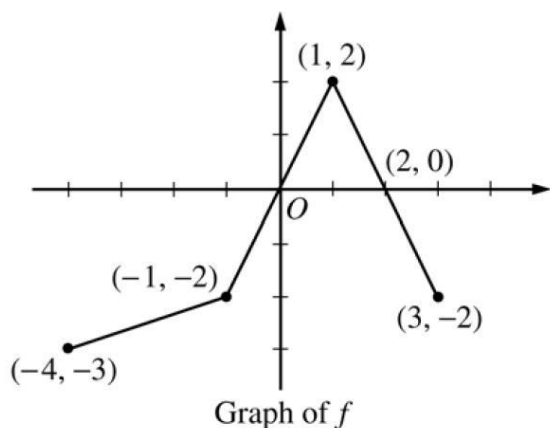
Negative:

Increasing:

Decreasing:

x-Intercepts:

y-intercepts:



4) Use Inequalities

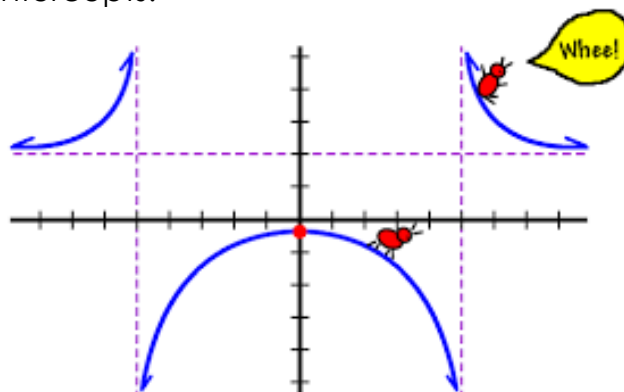
Positive:

Negative:

Increasing:

Decreasing:

y-Intercepts:



5) Use Interval notation

Positive:

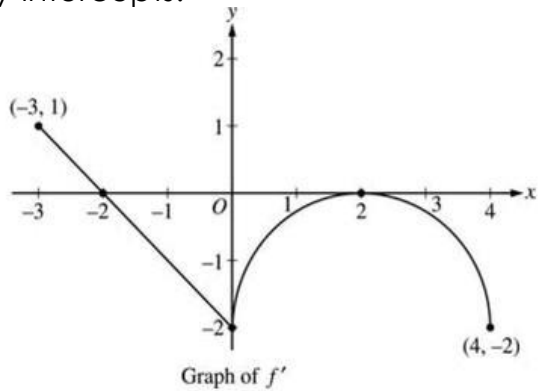
Negative:

Increasing:

Decreasing:

x-Intercepts:

y-intercepts:



6) Use Inequalities

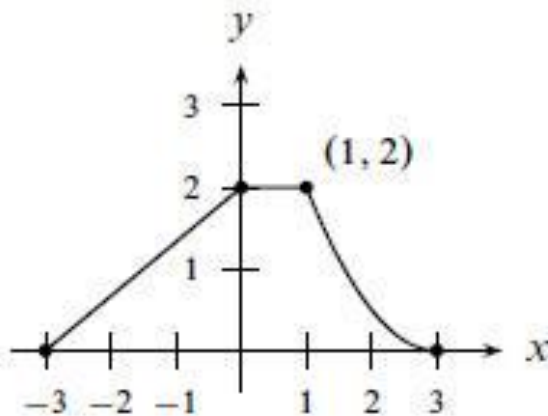
Positive:

Increasing:

Decreasing:

x-Intercepts:

y-intercepts:



7) Use interval notation

Positive:

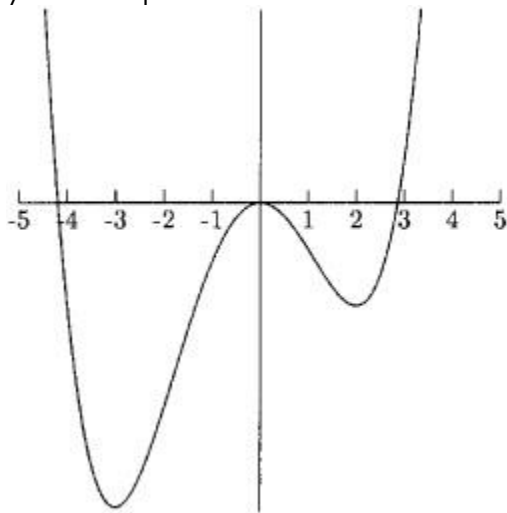
Negative:

Increasing:

Decreasing:

x-Intercepts:

y-intercepts:



8) Use interval notation

Positive:

Negative:

Increasing:

Decreasing:

x-Intercepts:

y-Intercepts:

